

HUESCA'S LOGISTICS PLATFORM



Plataforma
Logística - Huesca Sur

LOCATION

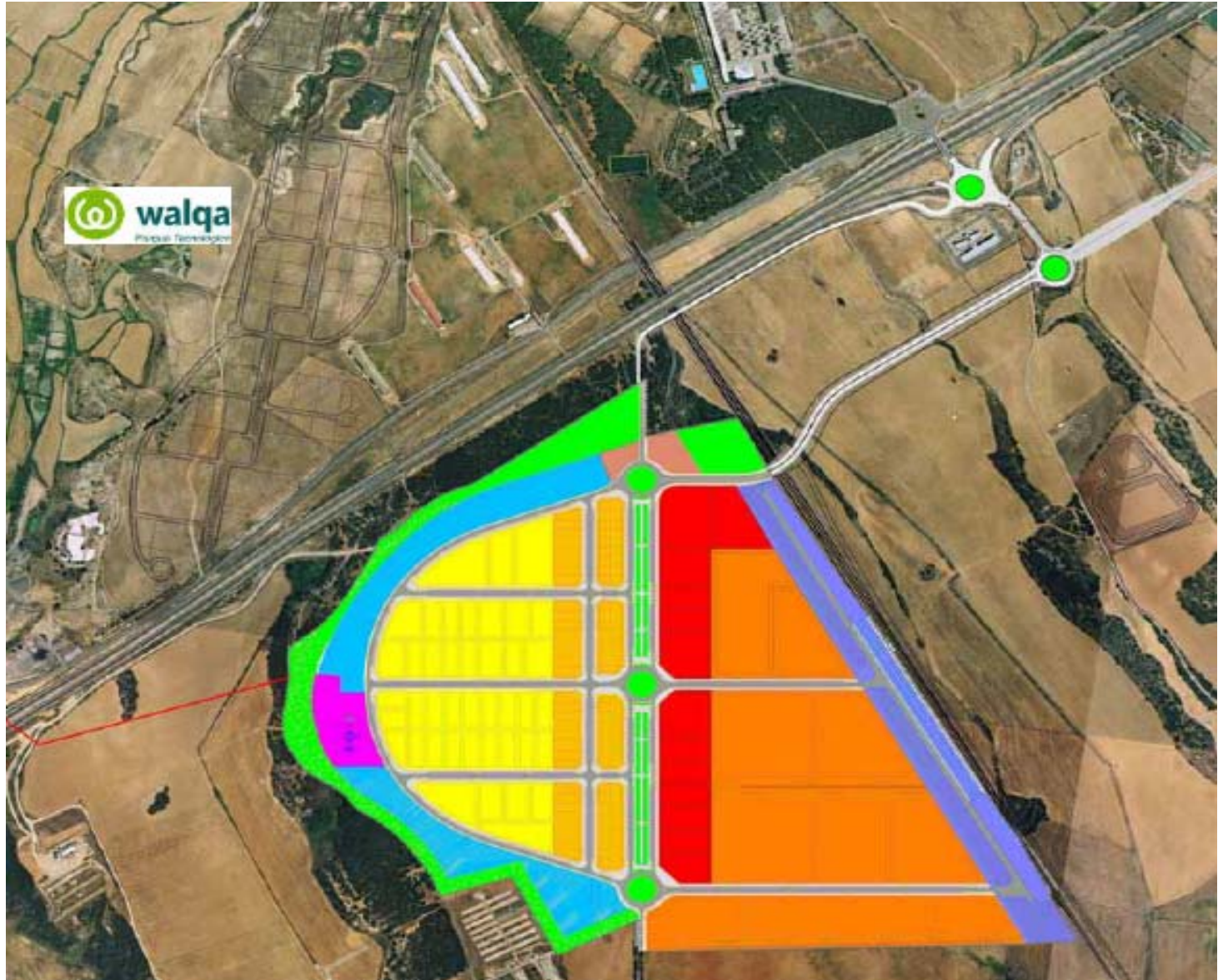


The city of Huesca is in the centre of Zaragoza, Barcelona, Pamplona and Pau (France), all important areas of economic activity.

The city is located halfway between the Cantabrian and the Mediterranean coastlines along the Pamplona-Huesca-Lérida future dual carriageway.

The logistics platform is two kilometres to the southeast of the city centre and close to the new area of activity developed over the last few years around the WALQA Technological Park, CEEI Business Innovation Centre and the University facilities.





walqa
Proyectos Tecnológicos

DETAILED USAGE DELIMITATION:

• Public and Social Uses Area:	96 444,53 m2	(8.33%)
• Industrial Logistic Area for Small Businesses:	74 776.52 m2	(6.46%)
• Ind. Logistic Area for Medium-sized Businesses:	168 570.13 m2	(14.56%)
• Industrial Logistic for Large Businesses:	94 368.57 m2	(8.15%)
• Intermodal Railway Logistic Area:	312 158.49 m2	(26.98%)
• Services Area:	9 981.50 m2	(0.86%)
• Common Infrastructures:	15 087.59 m2	(1.30%)
• Road Network and Public Car Park:	167 227.15 m2	(14.45%)
• Railway Siding:	102 991.43 m2	(8.90%)
• Public Landscape Area:	115 456.18 m2	(9.98%)
• Total Net Area :	659 855 m2	(56,52%)
• TOTAL AREA:	1 157 062 m2	

PRINCIPAL FEATURES:

- Drinking Water Supply
- Industrial Usage Water Supply
- Water Treatment Plant
- Railway Siding
- Minimum Plot: 500 m²
- Maximum Plot: 200 000 m²
- Construction: 0.6 – 2.6 m²/m²
- Gas Supply
- Power Supply: 60 300 kVA

DEVELOPMENT CONDITIONS

FOR LOGISTICS AREA:

- * **Minimum Plot:** 500 – 10 000 m²
- * **Offsets:** 0 -10 m depending on the borders
- * **Occupation:** up to 70 % net plot
- * **Maximum Height:** 5 floors, 22 m
- * **Construction:** 0.6 – 2.6 m²/m² net plot

PROJECT DEVELOPMENT PROCEDURE

SVA Management Commission:	25 February 2004
E.I.D. & Rom. VII Joint Venture Design Contract awarded.	14 July 2004
Public Information Stage (2 months).	15 December 2005
Government Project Approval.	20 June 2006
Vialex Roldan, S.L. & Caminos y Construcciones Civiles, S.A. Joint Venture Construction Contract awarded.	29 September 2006
Beginning of Construction Works :	6 November 2006
Construction Works :	<i>COMPLETED</i>

ARAGON LOGISTICA



PLAZA

Plataforma
Logística - Zaragoza



PLATEA

Plataforma
Logística - Teruel



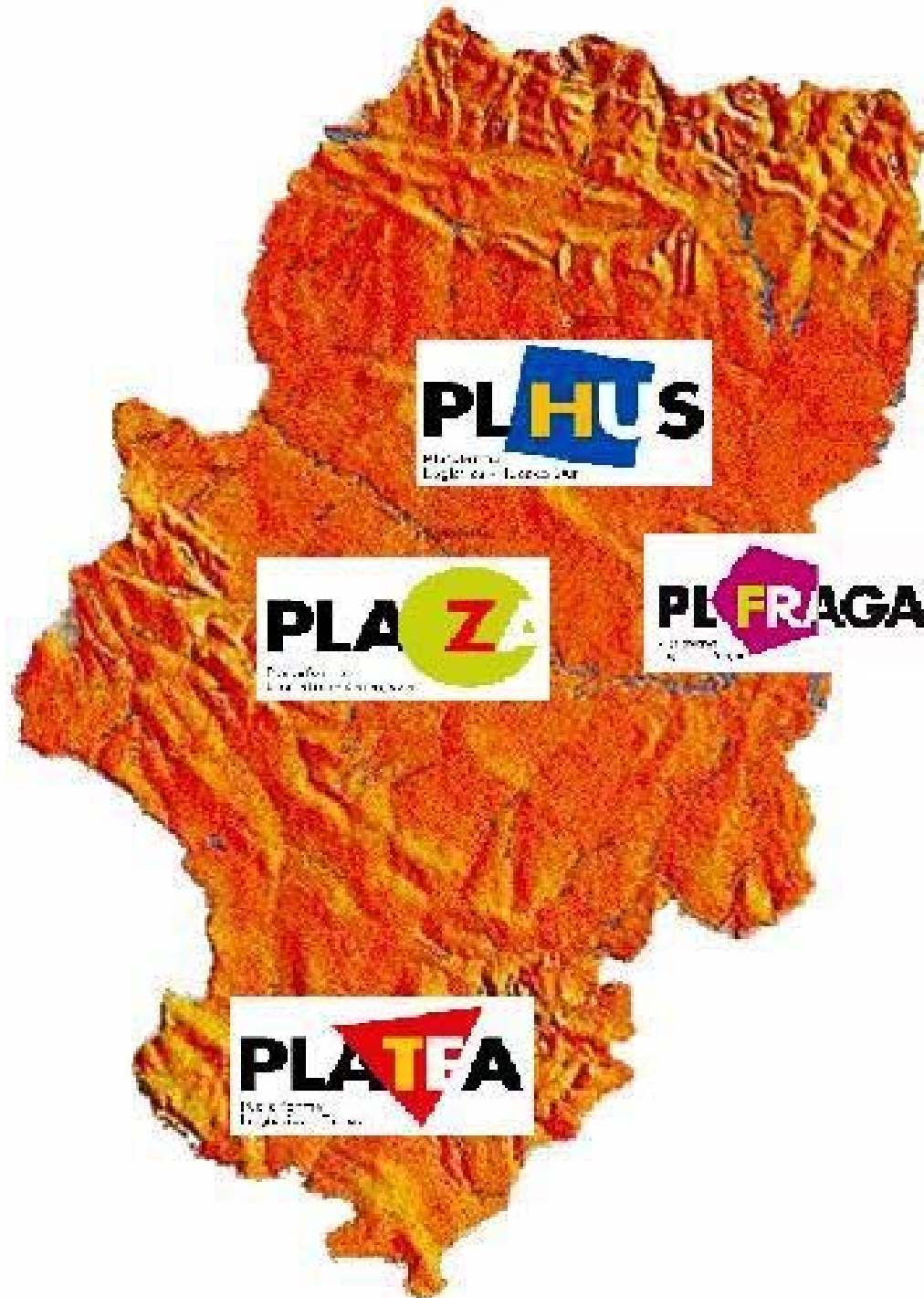
PLHUS

Plataforma
Logística - Huesca Sur



PLFRAGA

Plataforma
Logística - Fraga



PLHUS
Proyectos de Investigación

PLAZA
Proyectos de Investigación

PLFRAGA
Proyectos de Investigación

PLATEA
Proyectos de Investigación